



## SensFloor® at the VITA D'ORO residential area in Bad Griesbach, Germany

The health resort of Bad Griesbach in the Rottal region is situated about 25km southwest of Passau in the middle of the 'spa triangle' of Bavaria. As the largest golf area of Europe, the centre for Nordic walking in Germany, with three hot springs and various other leisure, sport, and wellness facilities, the town offers appealing opportunities all year round. The residential area is located only about 800m from the city centre and its medical and therapeutic facilities.

VITA D'ORO Konzept® (VITA D'ORO Concept)

Leading an autonomous life, living in age-appropriate surroundings, and remaining independent – this concept comes to life at the VITA D'ORO residential area in Bad Griesbach. Residents live in an open community that meets their needs both for entertaining company as well as for peace and quiet. Accessible living concepts and easily accessible communal facilities guarantee a high standard of living up to a ripe old age. VITA D'ORO's 69 buildings and three \*\*\*\*residential complexes with ten units each, six of which are penthouse apartments, are located on park-like grounds designed and cared for by landscapers, surrounded by a charming landscape with a perfect unspoiled view.

### Centrally Located Service Centre

The core of the residential area is the VITA D'ORO Clubhaus (clubhouse). This central service centre is located at the heart of the easily accessible residential area and offers not only regular events, but also various leisure, sport, cultural, and service packages as well as a swimming pool, fitness rooms, a modern lounge and a library. It also provides various individual ranges of care and service. Each resident of the VITA D'ORO residential area, upon purchasing his/her property, also acquires part of the Clubhaus and with it a right of co-determination.

### Exceptional Spatial Concept

The HEALTH & HOME CARE NETWORK GROUP design concept, based on perception-psychological approaches, is used to put personal decorating ideas into practice: Perception-oriented guidelines based on colour-psychological findings and scientific studies lay the foundation for long-term comfort in your own four walls. The well-wrought combination of light, colour, and surface has a health-promoting effect.

### SensFloor® for Comfort and Safety

We all want to remain fit and healthy as long as possible. If we require care when we reach a high age, we at least want to be able to stay in our homes. SensFloor supports this: Orientation lights that turn on automatically at night prevent falls. When someone is lying on the floor, a fall alarm is triggered and transmitted to the service centre at the Clubhaus. Combined with the burglar-alarm, it is possible to detect unauthorised people entering a building. Movements by residents on the other hand do not trigger any alarms. When a person is living alone, too long a period of inactivity may give cause for concern. In this case the floor notifies the service centre and thus ensures that a person does not have to suffer too much time helplessly. If at some point a resident requires a wheelchair, doors can be activated automatically and intelligently, already opening when someone approaches them. This prevents having to align wheelchairs or rollators with them. Doors remain closed if someone merely stands in front of them or passes by. SensFloor can be combined with a protective system that acts to prevent residents suffering from dementia or prone to running away from leaving unnoticed. All these functions can individually be added at a later date without any reconstruction work necessary.



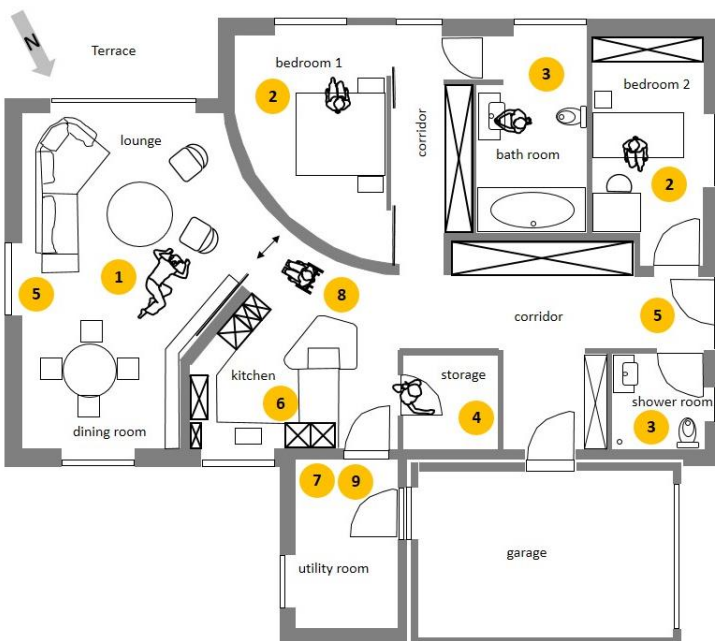
The core of the residential area is the VITA D'ORO Clubhaus (clubhouse).

It is equipped with a swimming pool, multi-purpose rooms, a lounge, a library, therapeutic rooms, and a sauna area, as well as a technical centre with a 24h on-call emergency service for the entire park. This is also where all alarms from any buildings are transmitted to.



The SensFloor underlay is installed in the apartments and buildings beneath TILO parquet, DLW linoleum or carpets. It is entirely invisible and serves as a buffer against footfall noise.

This sensor flooring notices when someone is walking, and recognises people lying on the floor and triggers an emergency call to the centre.



The basic functions of the SensFloor system combined with building automation and burglar alarm in our show house:

1. Fall recognition
2. Orientation light
3. Activity monitoring
4. Automatic light switch
5. Localisation of intruders
6. Water-leak detection

Individual add-on modules for later installation:

7. Remote SensFloor maintenance
8. Automatic doors
9. Energy conservation
10. Protection to stop demented residents from running away